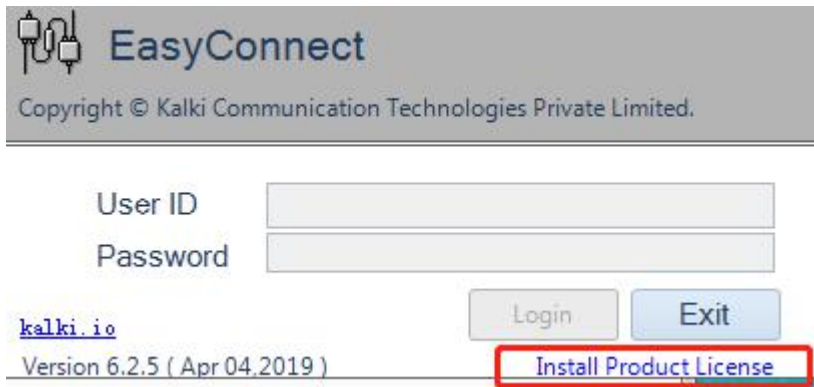


EasyConnect Install Guide

User needs to use EasyConnect software to configure the module, and the user needs to install EasyConnect.

Step 1: Install software

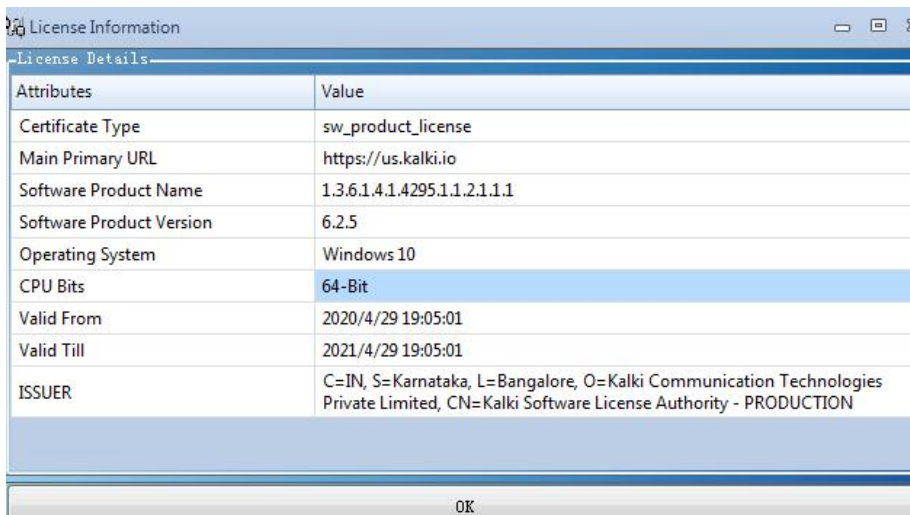
Open the EasyConnect 6.2.5 folder and run Setup.exe. If you open EasyConnect for the first time, click "Install Product License".



Browse the product license, enter the password "a" and click "Install" to install.

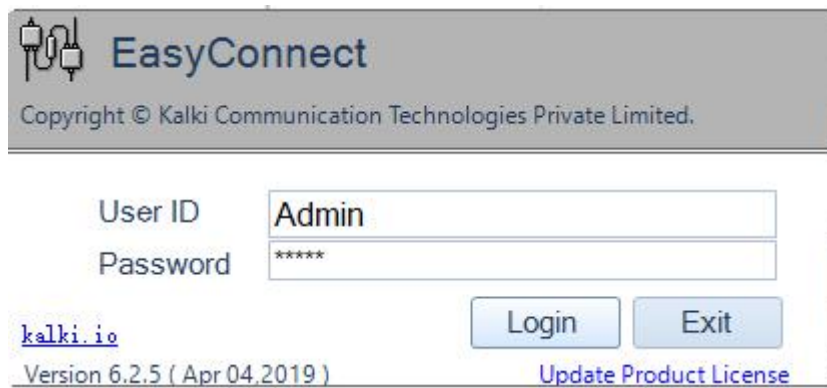


Installation authorization is successful.



Step 2: Log in to EasyConnect

The user login name is "Admin", and the login password is "Admin".



After logging in, a set password pop-up window appears, please set a new password.



Step 3: Successful installation

Then, the configuration software EasyConnect can be opened and used.